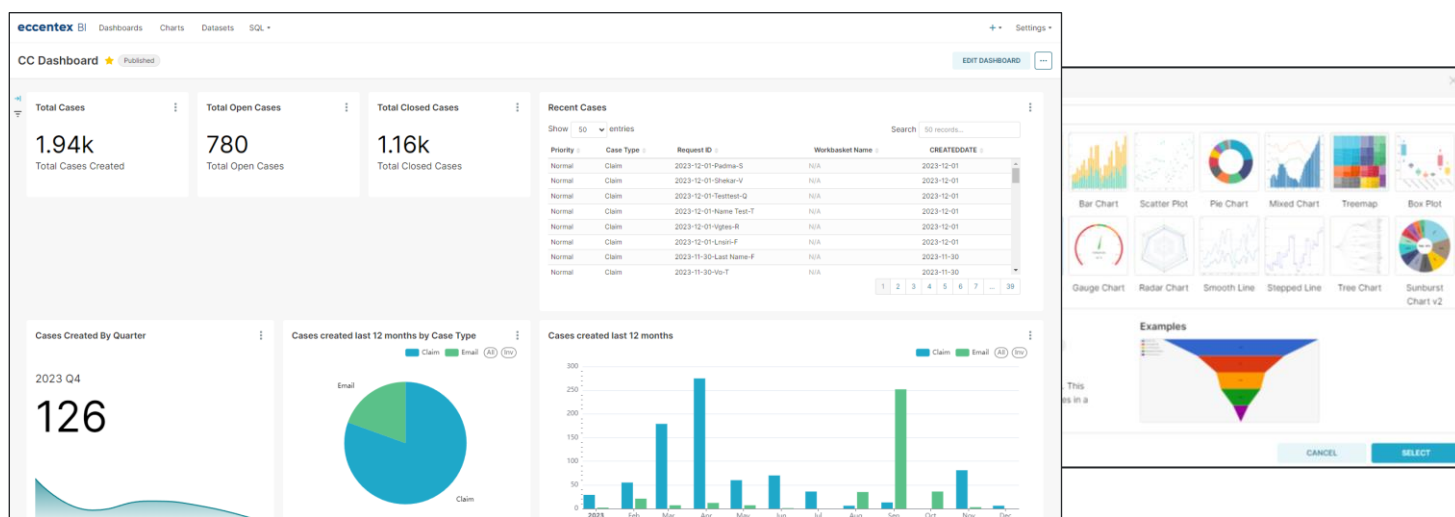


Business Intelligence (BI)

Analytics platform for **Eccentex HyperAutomation Cloud**

Eccentex BI is a comprehensive add-on tool that brings advanced analytics, dashboards, and insights to your mission-critical solutions – empowering every user with true business intelligence.

No-code data exploration • Pro-code queries • Self-service analytics



Eccentex BI is a powerful, easy-to-use business intelligence platform that provides advanced dashboarding, analytics and data exploration capabilities.

- **Visualize your data**

Create insightful and interactive reports and dashboards using our intuitive drag-and-drop interface. Utilize a wide range of charts, widgets, pivot tables, and tabular view components to bring your data to life.

- **Share insights as engaging stories**

Collaborate with others through secure sharing and granular permissions. Facilitate meaningful discussions around reports. Turn your business data into compelling narratives.

- **Break down data silos**

Connect and blend solution data with data across your enterprise; from other core applications to on-premise databases.

Business depends on having the right information at the right time. But line-of-business teams often struggle making sense of the massive amounts of data within their applications without business-friendly tools. They either rely on complicated spreadsheets or wait until a centralized data teams delivers them hard-coded reports.

Eccentex BI turns every team into a data team. It's self-service and automated analytics addresses common challenges businesses face when democratizing data access, such as security concerns, data availability, and lack of real-time access.

Leveraging our low-code design capabilities, Eccentex BI is incredibly easy to use, requiring no technical skills. Similarly, advanced users can dive deeper into the data with pro-code tools.

Ready to get started? Continue reading for a few ideas for how you can put this new capability to use.

Data Visualization

Drag-and-Drop Designer

Create free-form dashboard in any grid or layout then create engaging experiences by adding headers, text, images and URLs.

Custom Reports

Build dashboards from scratch and customize them with metric you want and decide how you want to view them.

Interactive Charts

Make actionable decision with 40+ interactive chart types that allow users to drill down into the data and filter results.

Advanced Visualizations

Get deeper insights with flexible charts like pivot tables, heatmaps, funnels, geographical plots, and much more.

Custom colors and styling

Design your charts with fully custom colors and themes to best fit your brand.

Data Exploration

Self-service BI

Enable users to create personal or sharable dashboards using only data they are authorized to use.

Semantic Layer

Expand and maintain trusted, curated datasets with human-friendly names and "last mile transformations" that will help non-technical teams build better visualizations.

SQL Editor

Explore your data using SQL and rapidly iterate through queries, which can be shared among users and used across visualizations.

Auto-complete queries

Move faster by inserting tables, columns, and definitions as you write your queries.

Predictive Analytics

Forecast future trends and patterns with built-in time series forecasting, smoothing, rolling averages and seasonality adjustment.

Automatic Refresh

Provide real-time dashboards and cached results that can automatically refresh based on a schedule.

Collaboration and Monitoring

Dashboard Sharing

Publish dashboards across teams or share with specific co-workers through permanent links, email or screenshots.

Annotation Layers

Enhance your visualizations by adding annotation layers that provide context or highlight specific events or milestones; contributing to a shared understanding of the data.

Scheduled Reports

Provide a snapshot of a dashboard and send it by email along with a link that enables recipients to log in and explore it directly in their browser.

Conditional Alerts

Stay informed about important changes to your data (such as a spike in support tickets) by sending notifications through email or Slack.

Data Governance

Curated Data Sets

Define views with isolation keys to filter analysis and results to only the segments of data that users need to see.

KPIs & Metrics

Measure business performance by using an intuitive builder to summarize and aggregate over entire data sets.

Calculated Columns

Define virtual columns using formulas that transform data on-demand – making it easier to analyze and visualize without changing the underlying data models.

Indexing Support

Improve data access and search efficiency on large data sets by adding indexes to columns in your Eccentex solutions that are going to be filtered or sorted often.

Multiple Data Sources

Get the full picture by blending in-platform results with a variety of data sources, including SQL databases, NoSQL databases, spreadsheets, and cloud data warehouses.

Security

Role-based Access Control (RBAC)

Manage who has access to which datasets, dashboards, standard actions and admin tasks with preconfigured and custom roles.

Row Level Security (RLS)

Exert a granular level of control over who can query and view specific datasets and records.

Performance Guardrails

Limit how much data a query can return to protect users from accidentally executing large requests that can affect your product apps.

Action Logging

Optionally record every action taken by your users, such as tracking changes to a dashboard or adding a new data source.

Secure Eccentex Cloud

Eccentex BI runs on Microsoft Azure; all data is secure on transit using Transport Layer Security (TLS) 1.2 or higher, plus all data storage is encrypted on rest with AES-256.

Productivity

Python Support via Jinja

Support query templating by embedding Python code within SQL queries to customize data retrieval based on user input, context or filters.

Tagging

Enable your users to organize, find, or share assets such as dashboards, charts, and saved queries.

Query History

Quickly pick-up where you left off by exploring previously executed queries and replay them in the SQL Editor.

Saved Queries

Create a personal library of queries, share them with other teammates, and use them within your visualizations.

Export & Import

Manage multiple Eccentex BI environments with the ability to export a dashboard's configuration and import it to another instance, such as promotion a dashboard from QA to production.

For more information, please visit us at eccentex.com

**Some features may require additional subscription or service*